

**JAHRESTAGUNG
DER ÖSTERREICHISCHEN
GESELLSCHAFT
FÜR SENOLOGIE**

**Prädiktive Faktoren:
Anforderungen für die
Onkologische Therapie**

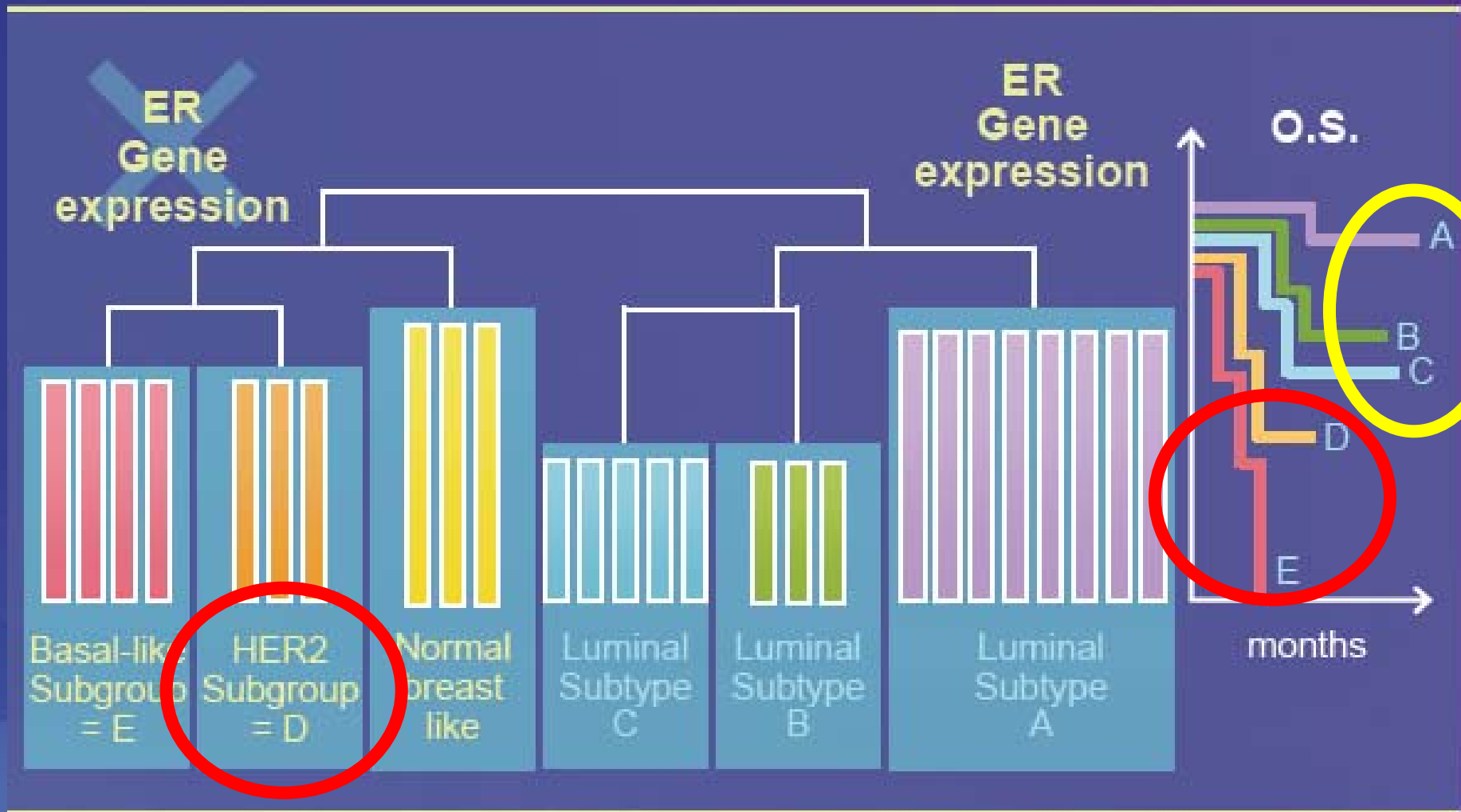
G.Steger

**„Die Interdisziplinäre Kunst
... des Heilens“**

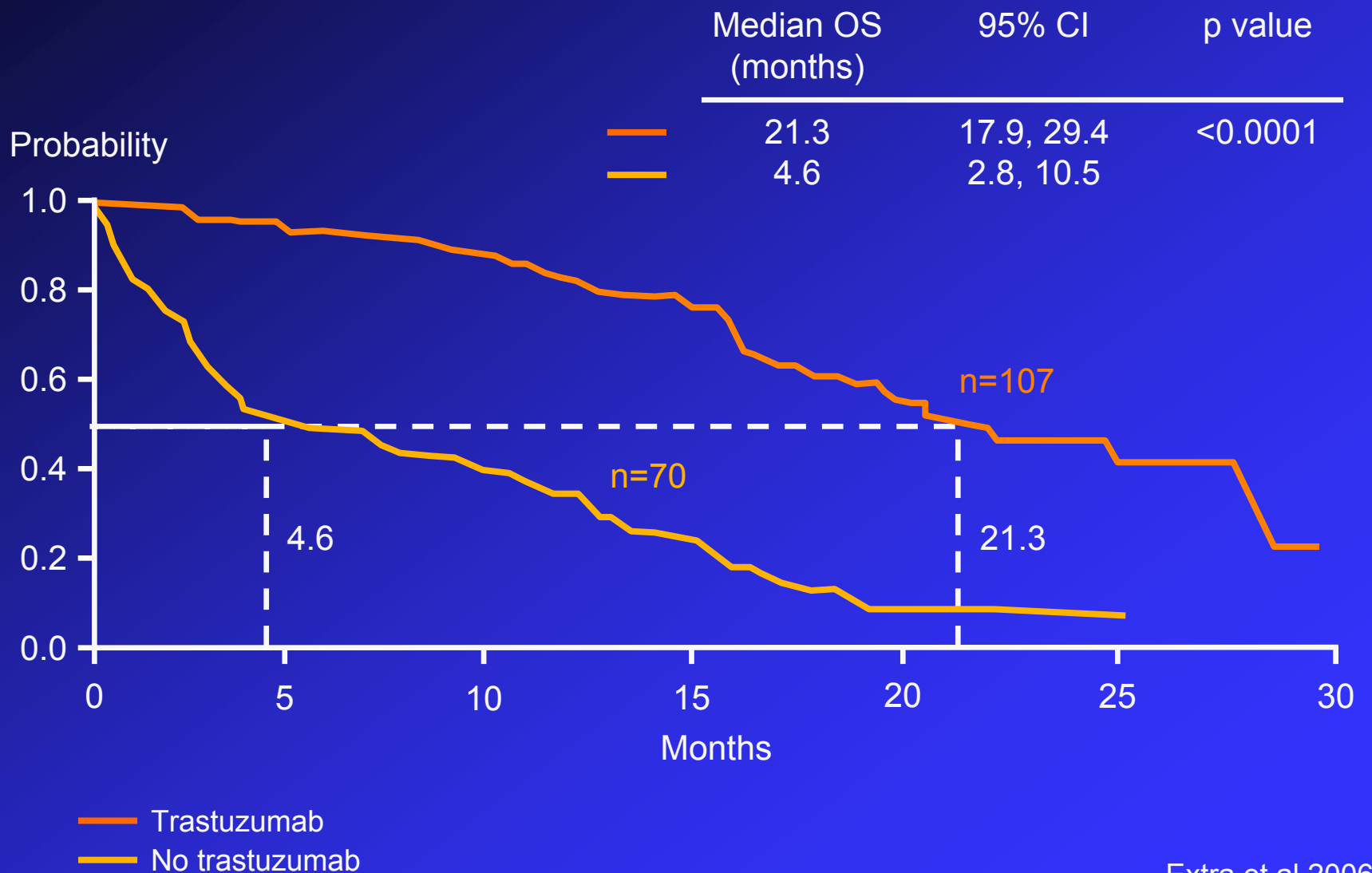


**14. – 16. Oktober 2010
Wien, Museumsquartier**

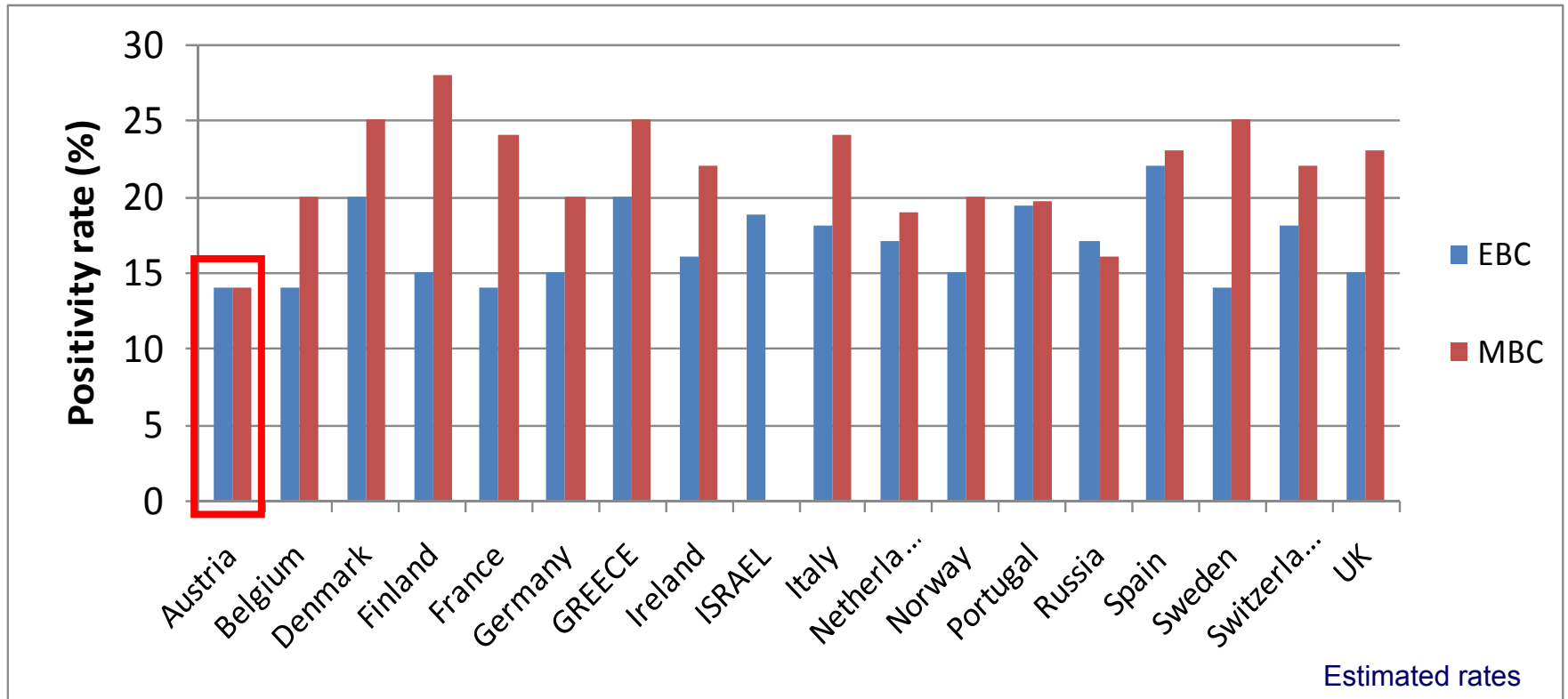
Gene Expression Patterns of Breast Carcinomas Predict Survival



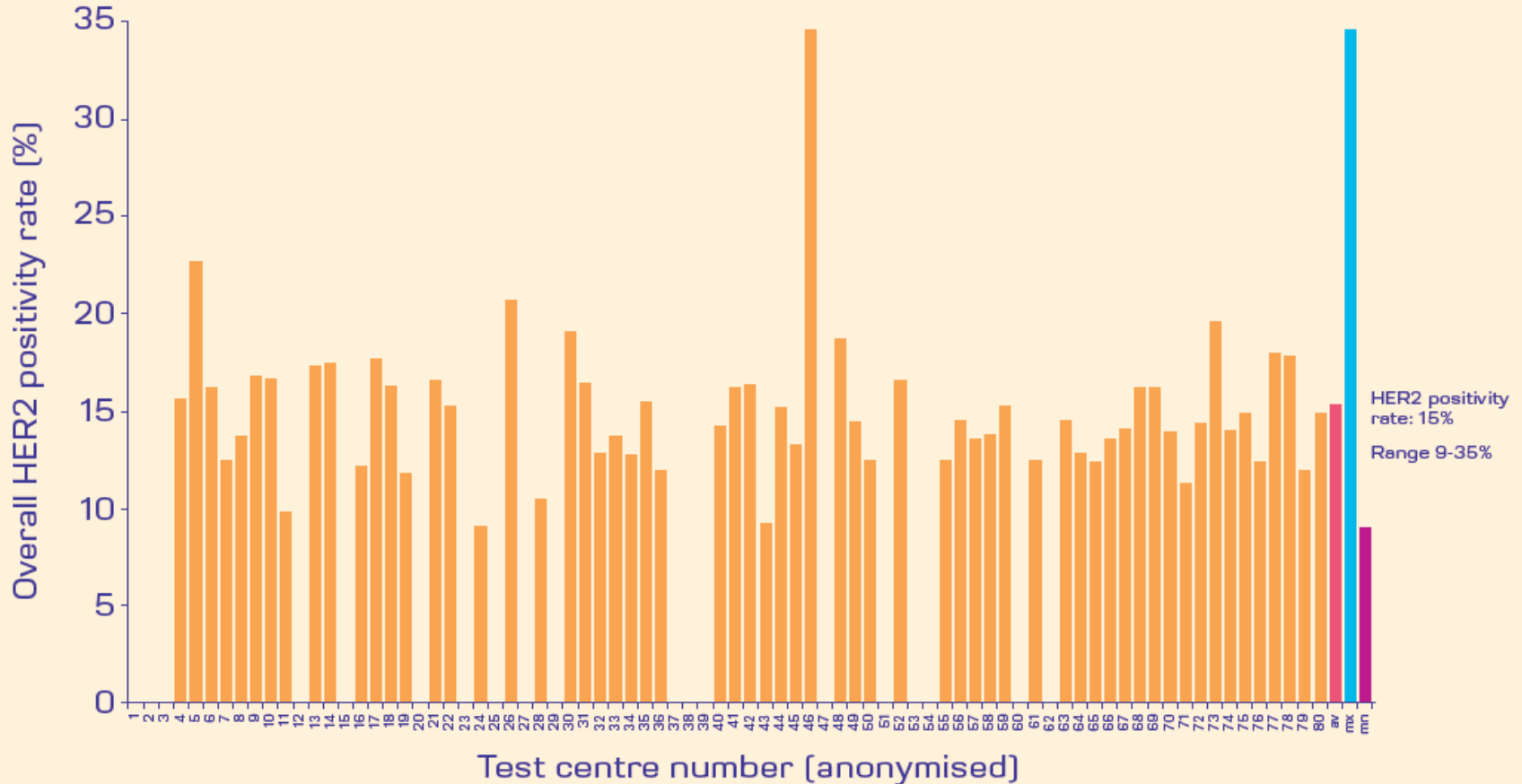
Trastuzumab or No Trastuzumab: Overall Survival



HER2 positivity rates vary across countries

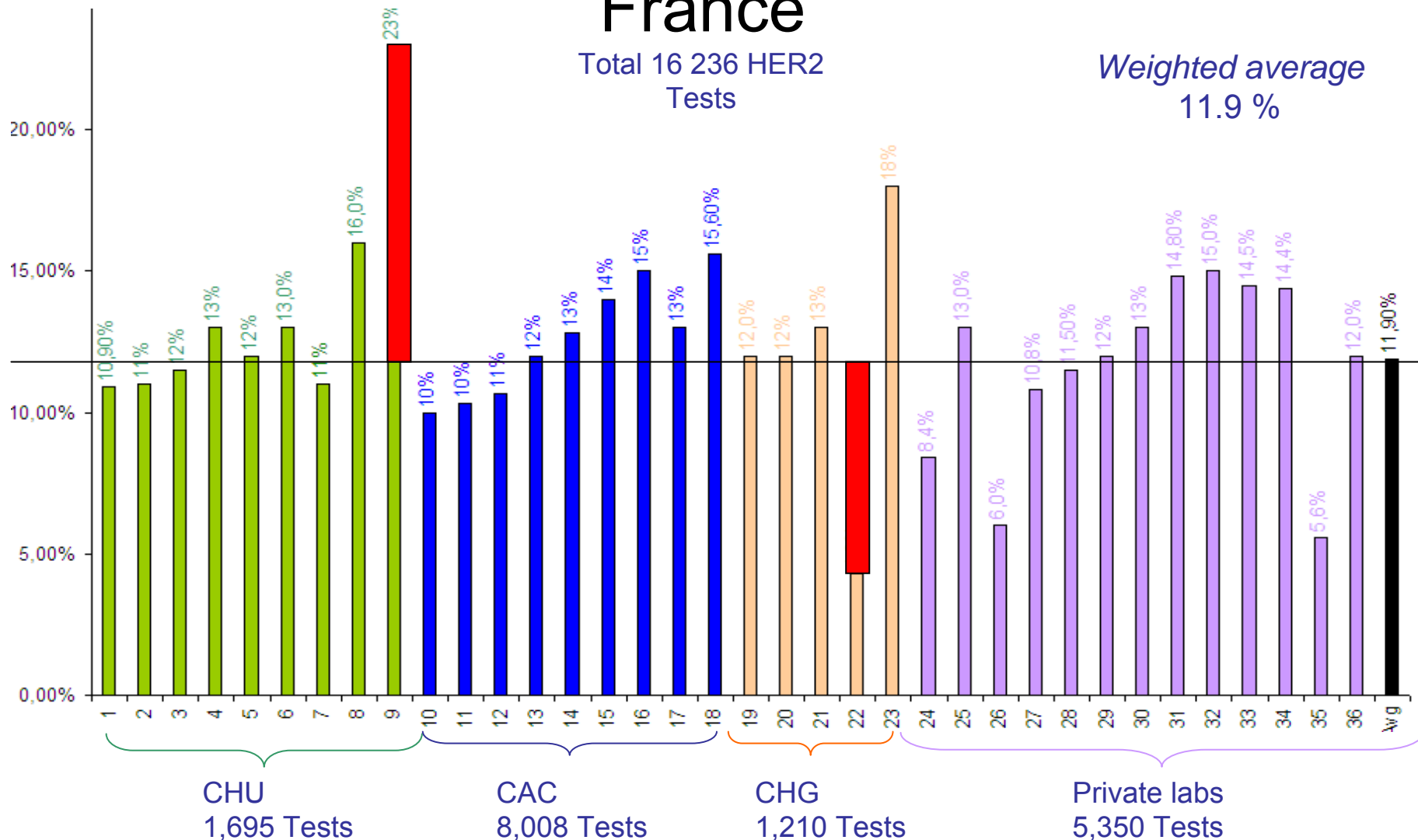


HER2 positivity rates vary across centres - UK



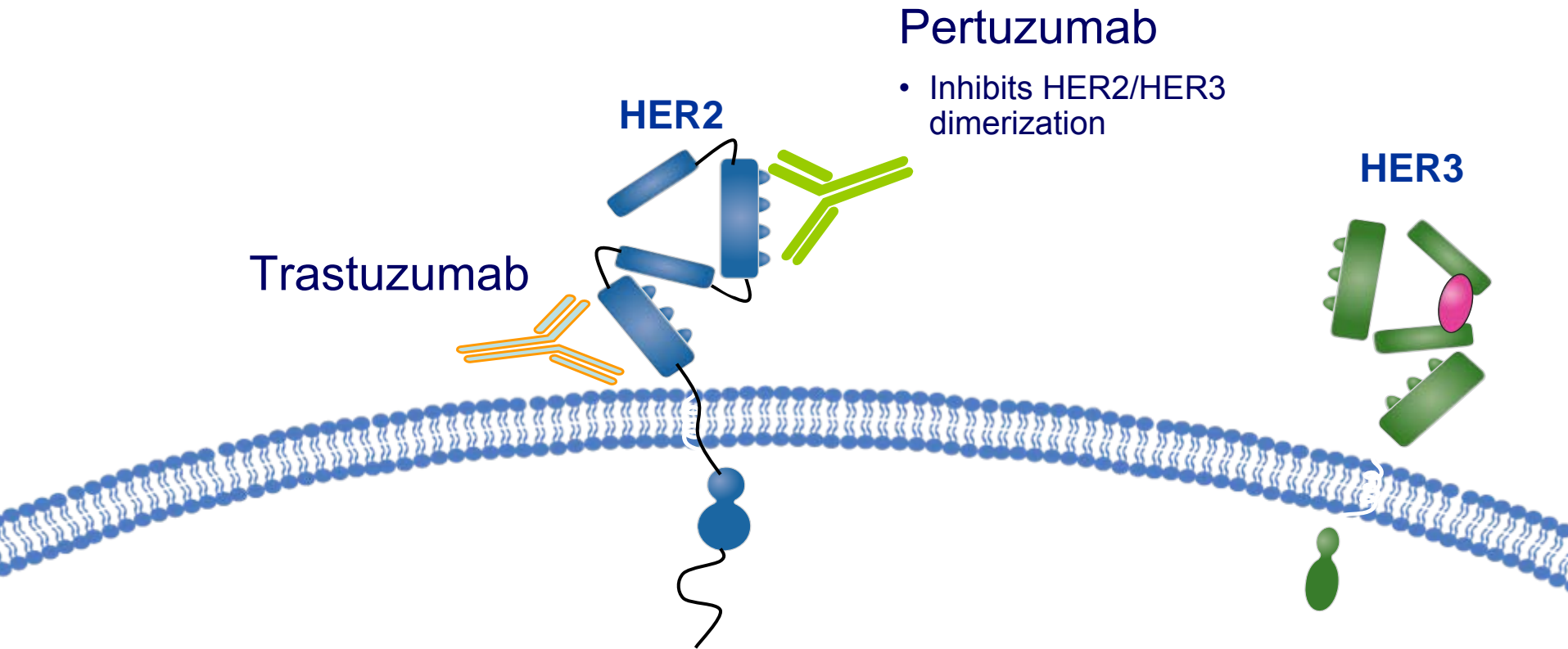
UK HER2 positivity rates (IHC 3+ and IHC 2+/FISH+)
vary between test centres

HER2 positivity rates vary across centres - France

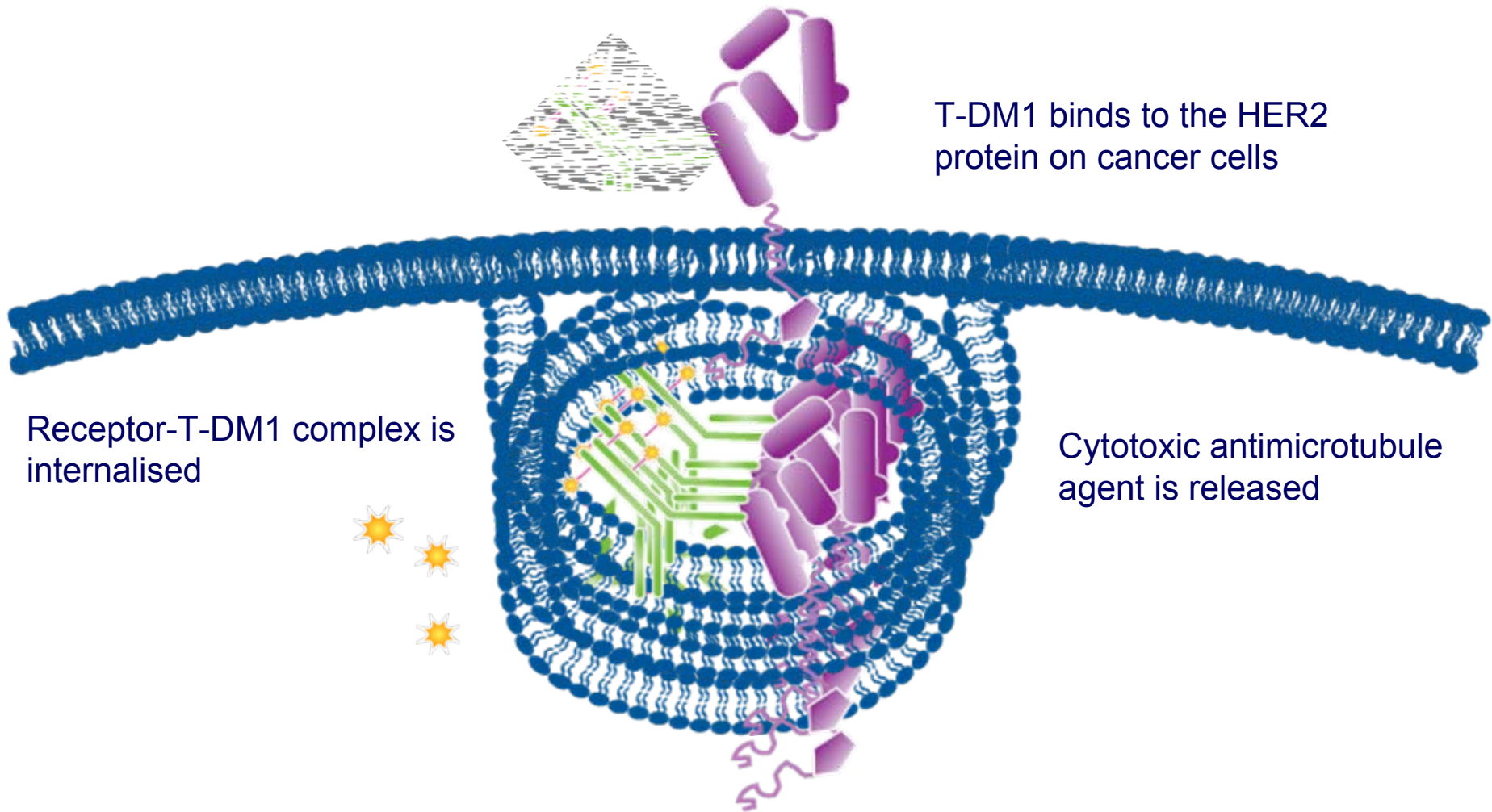


Source: French affiliate mkt research

Pertuzumab and Trastuzumab bind to different regions on HER2 and have synergistic activity



T-DM1 selectively delivers a highly toxic payload to HER2-positive tumour cells



LoRusso P et al, abstract 1016,

Poster discussion ASCO 2010

Quantitative Assessment of diagnostic markers and correlations with efficacy in two phase II studies of **trastuzumab-DM1 (T-DM1) for patients with metastatic breast cancer (MBC) who had progressed on prior HER2 directed therapy**

Both studies demonstrated clinically meaningful ORRs of single-agent T-DM1

Table 2. Antitumor Activity in All Treated Patients

	TDM4374g[*] (n=110)	TDM4258g[†] (n=112)
ORR, % (95% CI) [‡]	32.7 (24.1–42.1)	25.9 (18.4–34.4)
Clinical benefit rate, % (95% CI) [§]	48.2 (38.8–57.9)	39.3 (30.3–48.3)

ORR=objective response rate.

* Approximately 9 months minimum follow-up from last patient in (LPI)

† Approximately 12 months minimum follow-up from LPI

‡ Complete or partial response determined by 2 tumor assessments ≥ 28 days apart

§ Includes patients who achieved a complete response, a partial response, or stable disease of ≥ 6 months from first day of study treatment.

Centrally confirmed HER2+ BC showed better responses to T-DM1

Table 4. Activity in Efficacy-Evaluable Patients by Central HER2 Status*

	TDM4374g		TDM4258g	
	n	ORR% (95% CI)	n	ORR% (95% CI)
Centrally retested HER2 status				
HER2-positive	76	40.8 (29.7–52.7)	74	33.8 (23.2–44.9)
HER2-normal	15	20.0 (5.7–44.9)	21	4.8 (<1.0–21.8)

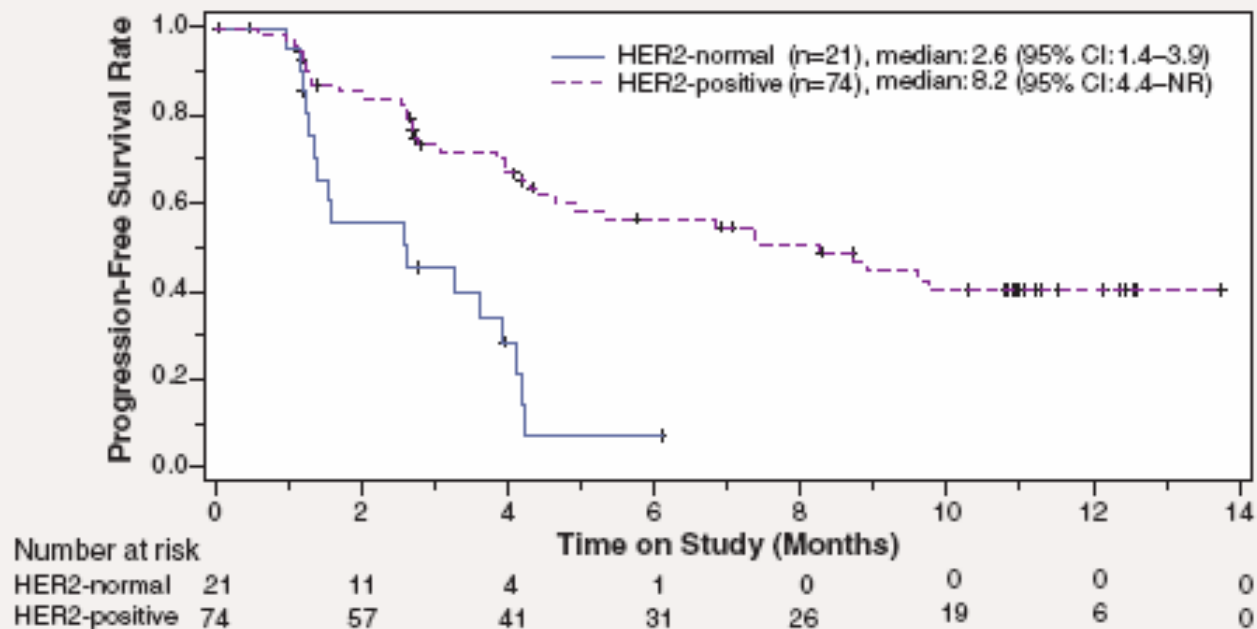
CI=confidence interval, ORR=objective response rate.
* Data from IHC2+ patients with no FISH data were not analyzed.

Archived Tumor tissue was centrally retested by IHC and FISH for its HER2 Status. Centrally HER2 positive tumors showed a higher response rate to T-DM1 than HER2 normal tumors.

These results reinforce the importance of accurate assessment of HER2 status in patients receiving HER2 targeted therapies.

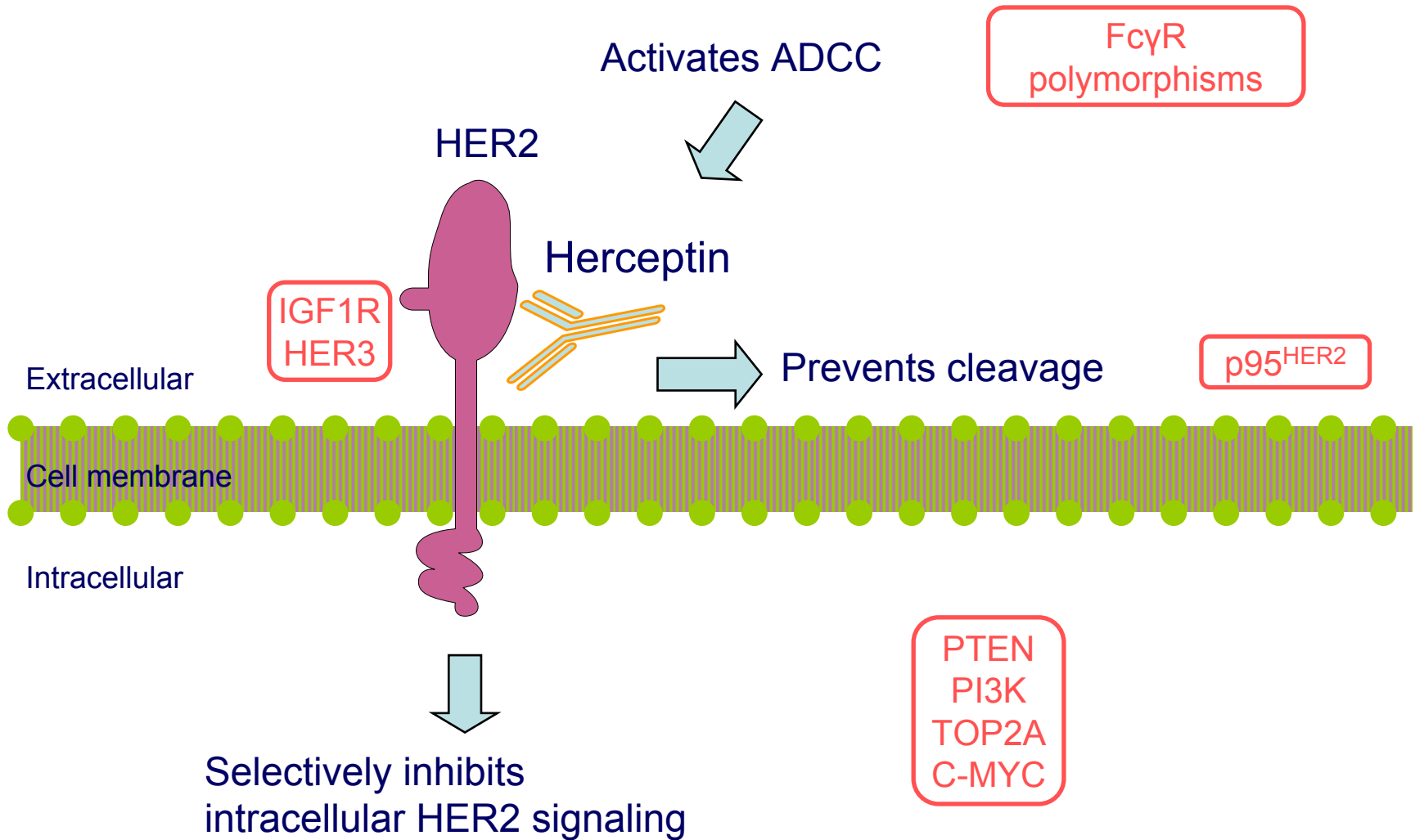
PFS in TDM4258g according to HER2 Status

Figure 2. PFS for Efficacy Evaluable Patients in TDM4258g



PFS was longer in patients with centrally confirmed HER2 Status compared to HER2 normal patients (8.2 months vs 2.6m).

Herceptin: potential biomarker candidates





**AUSTRIAN
BREAST &
COLORECTAL
CANCER STUDY GROUP**